

Droid Charge by Samsung Software Upgrade



Overview

To assist you with the mandatory system update for your DROID CHARGE BY SAMSUNG, this page contains the following information:

- System Update Instructions
- System Update while You are Roaming

Here are a few facts to keep in mind:

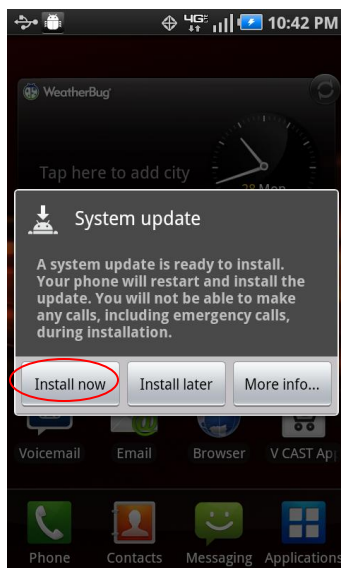
- System update size – 29.30 MB
- Estimated software download time – approximately 1-2 minutes
- Estimated software update time – approximately 8-10 minutes

System Update Instructions

1. You will be notified that a system update is available on your device. Tap **Install now** to continue. Your device will power off then power on and the installation will begin.

Note: If you choose "**Install later**" this will delay installation and you will be taken back to the home screen. The system update message will appear every 30 minutes until you install the update.

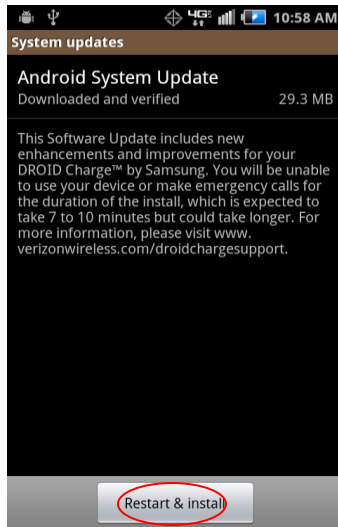
If you select "**More Info...**" you will receive more information regarding the system update on your device.



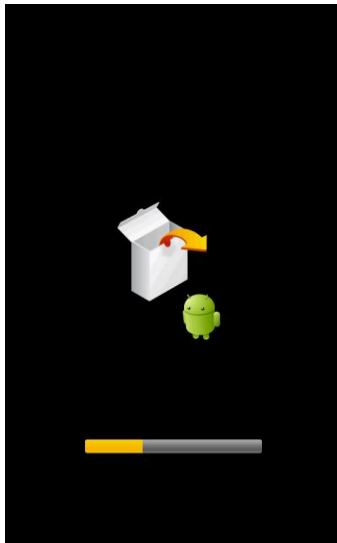
Droid Charge by Samsung Software Upgrade



2. After you've received first notification of the system update, you can manually initiate by going to "**Home**" > "**Applications**" > "**Settings**" > "**About Device**" > "**System updates**". Press "**Restart & install**". Your device will power off and back on and the installation process will begin.



3. The update has begun once your device powers off and back on and you see the following screen.



Droid Charge by Samsung Software Upgrade



System Update while You are Roaming

1. If you are roaming, you will not receive a system update notice. You will need to be in an area where Wi-Fi is available. Enable Wi-Fi on your device. Connect to Wi-Fi and wait for the update notification to appear or you can manually update by selecting "**Home**" > "**Settings**" > "**About phone**" > "**System updates**".
2. To enable Wi-Fi on your device, go to "**Settings**" > "**Wireless & networks**" > "**Wi-Fi settings**." Touch "**Wi-Fi**" to enable.

If the system update fails to install, you will get an error screen. However, this only means the software did not install properly. Remove and re-insert the battery and power the device back on. The device will power back on with original software and will prompt you once again to install the system update.

If the update fails again, please visit www.verizonwireless.com/contactus .