

BlackBerry® Curve™ 8530 Software Upgrade

Instructions



Overview

For the BlackBerry Curve 8530, there are 3 convenient ways to download the software upgrade for personal email users. Here are a few hints to make the process quick and easy:

- It will take you approximately 30 to 40 minutes to download the software, depending on network conditions and the number of applications on the phone.
- Once you download the software, the next step is to install it onto the device. Installation should take up to 2 hours additional. Keep in mind that during the installation you will be unable to make or receive calls, including emergency calls.

Corporate email users should consult with their IT or Telecom Directors for how upgrades are performed. After downloading, you then would need to install the software.

The download options are:

1. Over The Air Software Loading
2. Web Based Software Loading
3. Desktop Manager Software Loading

Over The Air (OTA) Software Loading

There are two types of OTA software loading:

1. OTA User Initiated
2. Verizon Wireless Network Pushed Process (Poke)

Please note the following when choosing the OTA method:

- **If you download the software upgrade over the air while traveling outside the National Enhanced Services Coverage Area and do not have an unlimited monthly kilobyte allowance, any kilobytes sent or received during the download will deduct from your monthly kilobyte allowance or be charged at the appropriate per-kilobyte rate**
- Download time is typically 30 – 40 minutes (dependent on network conditions).
- Upgrade can take up to 2 hours (dependent on the amount of user data on the device).

OTA - User Initiated

This process allows a user to navigate through the device options to seek updates.

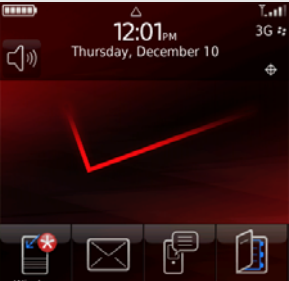
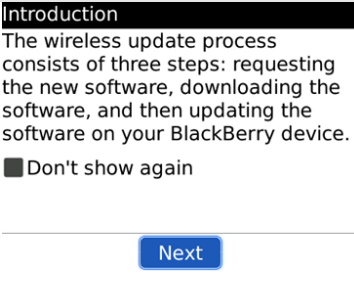
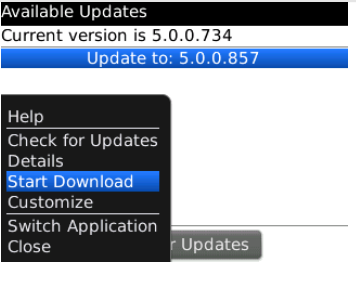
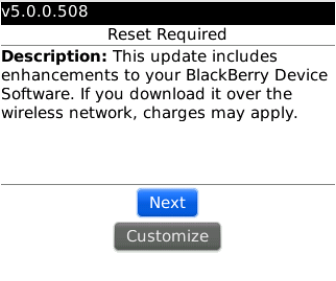
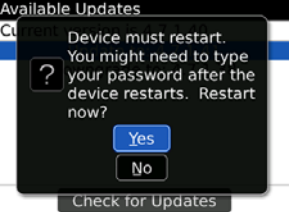
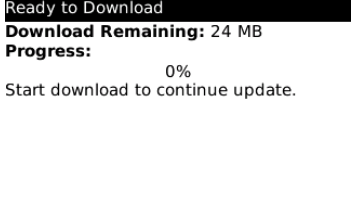
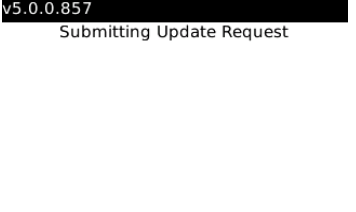
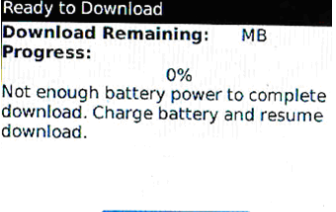
1. From the main menu select the **Options** icon
2. Select **Advanced Options**
3. Select **Wireless Upgrade**
4. Proceed to step 2 in the OTA Verizon Wireless Network Pushed Process (Poke) below

BlackBerry® Curve™ 8530 Software Upgrade Instructions



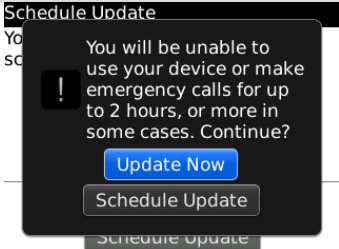
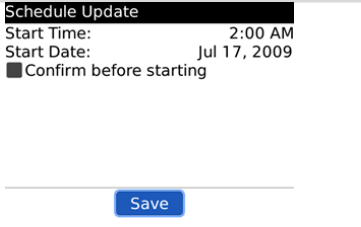
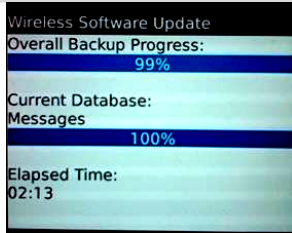

OTA – Verizon Wireless Network Pushed Process (Poke)

A new icon is sent from Verizon Wireless and loaded on the Curve 8530 device enabling the software upgrade process. If a software upgrade is not chosen, a poke will be sent automatically to all Verizon Wireless BlackBerry Curve 8530 devices that have not upgraded already.

<p>1. A new Wireless Update* appears.</p> <p>*A red asterisk indicates that something new is available.</p> 	<p>2. Select the Wireless Update icon and then click Next.</p> 	<p>3. Select Start Download to begin download process.</p> <p>*Images are for demonstration purposes and do not reflect current software version</p> 	<p>4. If the device needs to be reset, the following message shall be shown validating that the device is ready for an upgrade. Select Next.</p> 
<p>5. A Warning message displays, select Yes to proceed. The device resets (an hour glass will be seen).*</p> <p>*After the device resets, a password may be needed if the one was set up initially.</p> 	<p>6. After entering the password, if necessary, the following screen will appear. Click Next</p> 	<p>6a The update request message appears.</p> 	<p>7. The upgrade will not continue unless the battery is greater than 50% charged or plugged into the charger. Select Start Download to proceed.</p> <p>*If <i>Schedule Upgrade</i> is selected an option to specify a date and time will display.</p> 


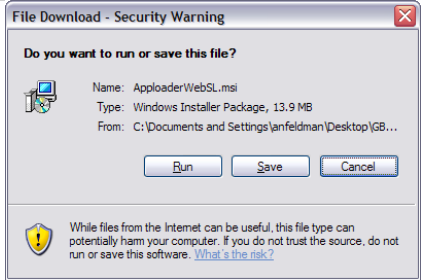

BlackBerry® Curve™ 8530 Software Upgrade Instructions



<p>8. Read the warning before upgrade begins: "You will be unable to use your device or make emergency calls for up to 2 hours". You are given the option to update immediately or Schedule Update. When ready, select Update Now or follow instructions to schedule the update..</p> 	<p>8a. To schedule an upgrade you can specify a date and time and save the setting.</p> 	<p>9. The data backup and operating system process runs and the device is reset and restored.</p> 	<p>10. The device upgrade is complete.</p> 
--	--	---	---

Web Based Software Loading

Please note that this option is not available for BlackBerry Enterprise Server users.

<p>1. Go to www.blackberry.com/updates.</p> 	<p>2. Install the BlackBerry® Application Loader and associated USB drivers.</p> <p><i>*This is a required step and only needs to be installed once.</i></p> 	<p>3. Follow instructions in Application Loader to update device software. Select Next.</p> <p>IMPORTANT NOTE: Do not change default back up settings or data could be lost.</p> 
---	--	---

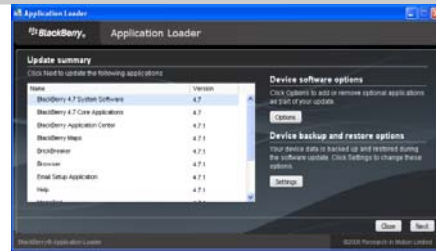
BlackBerry® Curve™ 8530 Software Upgrade Instructions



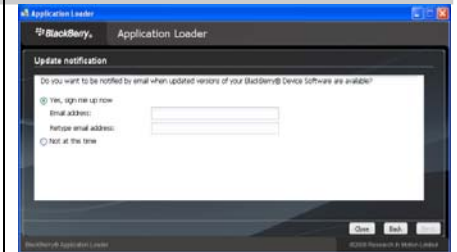
4. Click **Ok**.



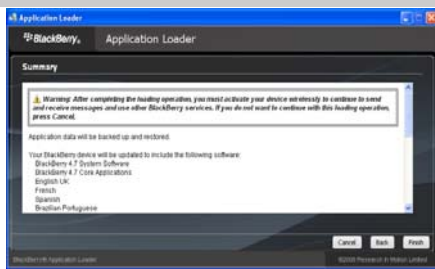
5. Select **Next**.



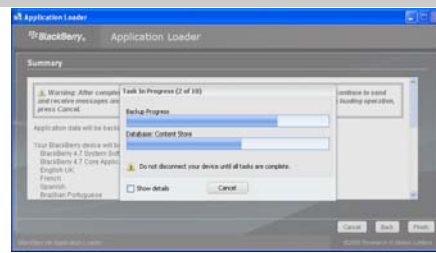
6. Select **Next** again.



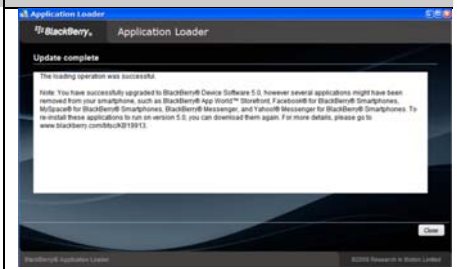
7. Select **Finish** and the device software update begins.



7a. **Note:** Data from the device is being backed up and will be restored once the upgrade is completed.



8. The upgrade is complete. Click **Close**.



Desktop Manager Software Loading

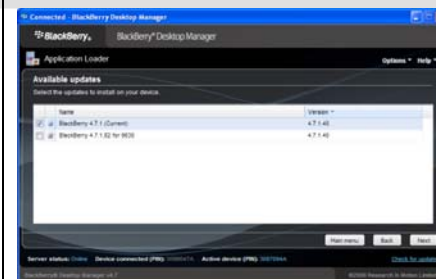
After the BlackBerry Application Loader and associated USB drivers have been installed, the Desktop Manager Software Loading procedure can be followed. This option can be completed using the Desktop Manager CD and cable that were included in the box.

The Desktop Manager can also be downloaded at www.vzam.net/blackberry.

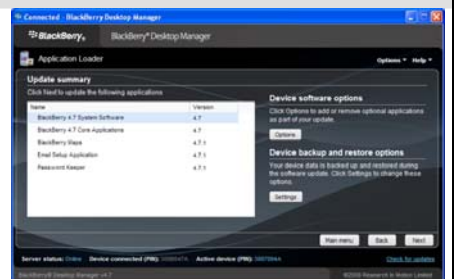
1. Connect the device to the computer. After the Desktop Manager application opens, select the **Application Loader** from the Main Menu.



2. A list of available software is displayed with the recommended upgrade selected by default. Select **Next**.



3. Select **Next** again.



BlackBerry® Curve™ 8530 Software Upgrade Instructions



4. Choose whether to sign up for email notification of updated software versions.



5. Select **Finish** and the device software update begins.

